



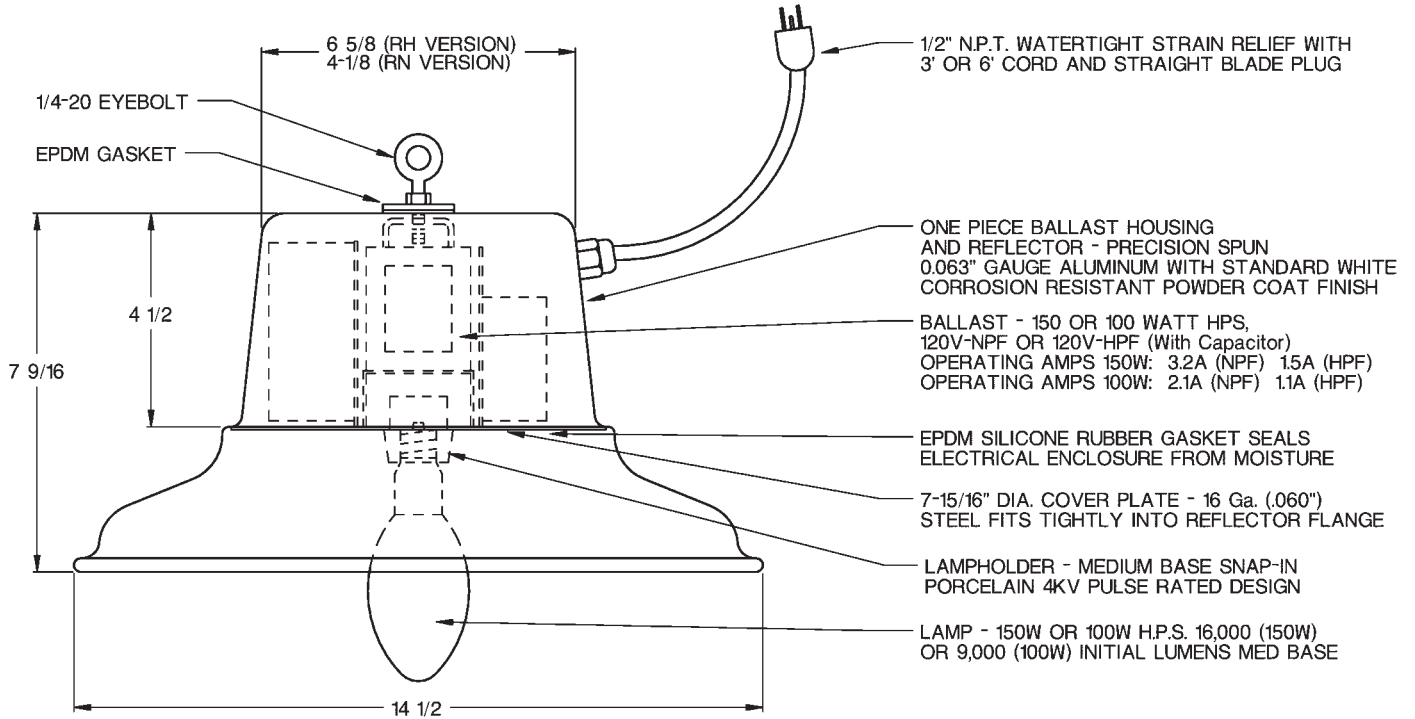
SBL Series Breeder Light

SINCE 1918

SBL SERIES SPECIFICATIONS



APPLICATION: Poultry industry breeder houses.
LAMP: 100 or 150 watt high pressure sodium 24,000 hours life, med. base.
HOUSING CONSTRUCTION: One-piece spun heavy gauge aluminum. Turned-in bead provides strength and prevents accumulation of dirt.
FINISH: Standard finish is white powder coat
MOUNTING: 3/4" eyebolt in fixture top.
BALLAST: Highest quality Class H core and coil 120 volt reactor. Available in normal or high power factor.
SOCKET: Medium base, glazed porcelain, 4KV pulse rated lamp holder with nickel plated screw shell.
GASKETS: Memory retentive, die-cut EPDM silicone for superior sealing and heat resistance.
APPROVALS: Listed with Underwriter's Laboratories for WET LOCATIONS. C-UL Listed for Canada.
WARRANTY: Six (6) years on fixture, Two (2) years on ballast, One (1) year on lamp.



SBL SERIES ORDERING GUIDE

Series	Wattage	Light Source	Voltage / Ballast Type	Options
SBL	100 150	HPS High Pressure Sodium Medium Base	120RN Normal Power Factor Reactor	3CP 3' Cord and Straight Blade Nema 5-15 Plug 6CP 6' Cord and Straight Blade Nema 5-15 Plug
SBL	100 150	HPS High Pressure Sodium Medium Base	120RH High Power Factor Reactor	

EXAMPLE OF A TYPICAL ORDER

SBL — 150 — HPS — 120 — 6CP